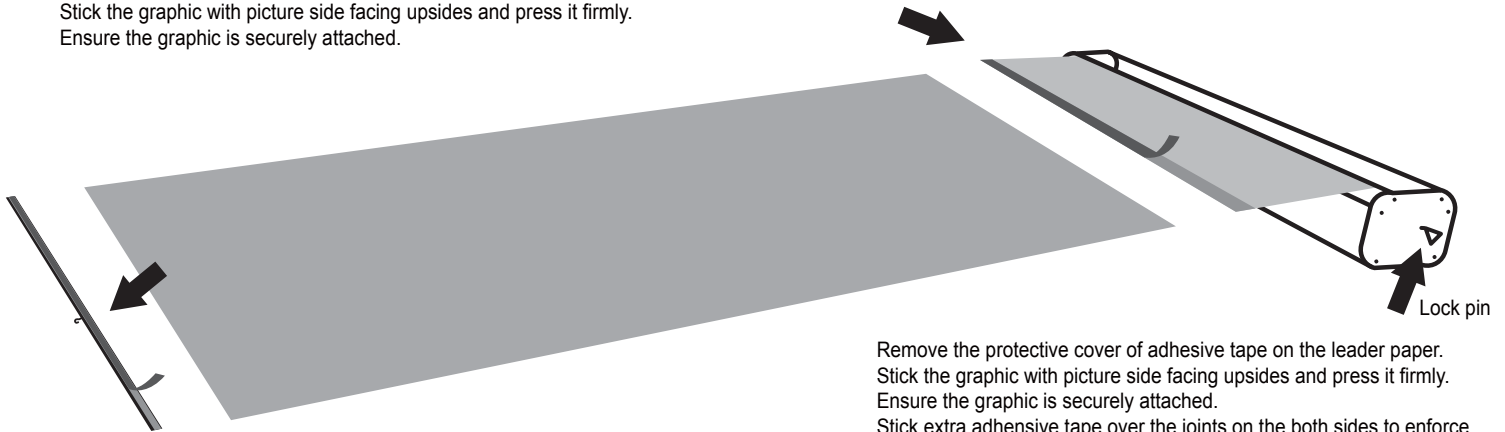
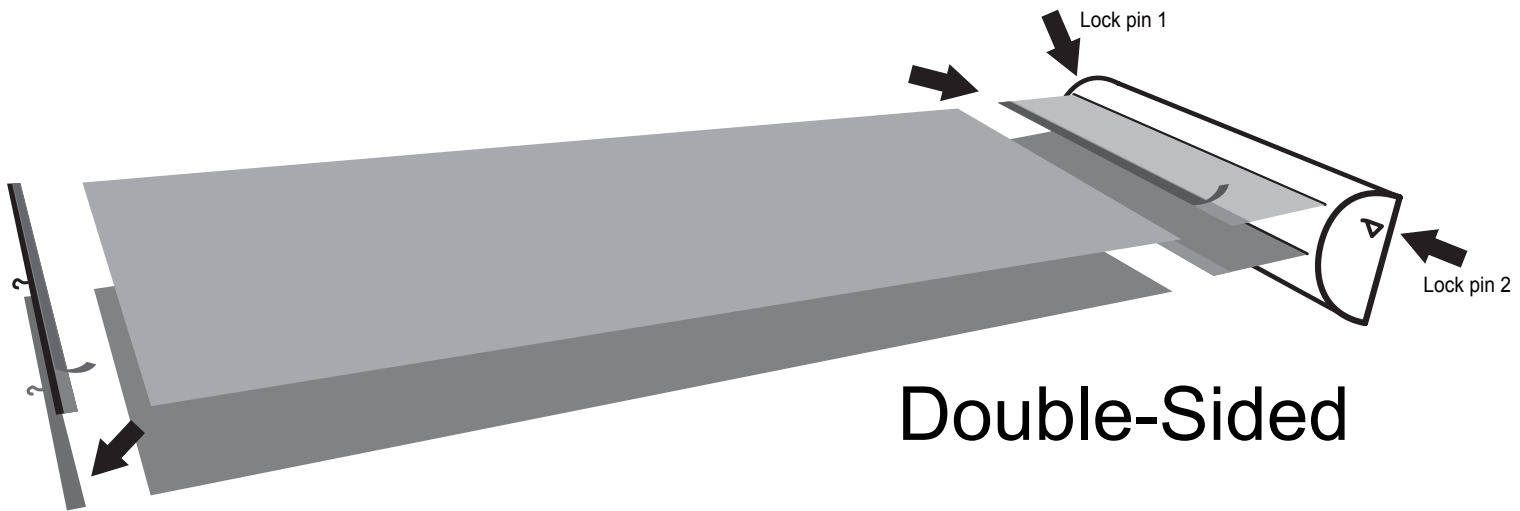


# Replacement Banner

Remove the protective cover of adhesive tape on the top trim.  
Stick the graphic with picture side facing upsides and press it firmly.  
Ensure the graphic is securely attached.

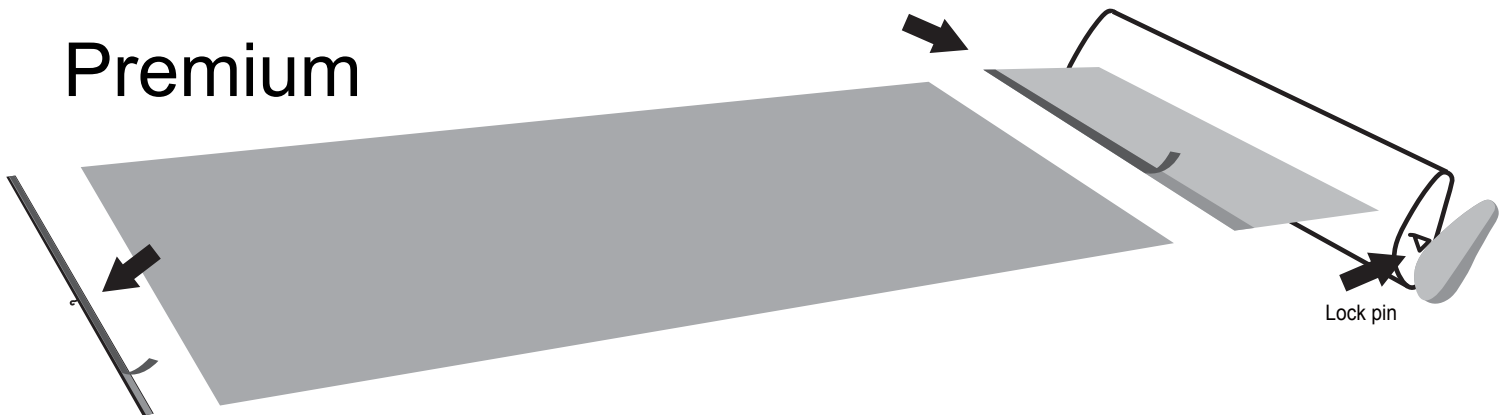


## Standard



## Double-Sided

## Premium



### **IMPORTANT:**

**DO NOT** remove the lock pin from the base unit at any stage other than that directed in the instructions below

Download an invoice on our website

Please login to our website to download your latest invoice,  
or contact us for help [service@banneraholic.com](mailto:service@banneraholic.com)

Canada  
United States  
New Zealand  
Australia

[www.ca.flagaholic.com/account.html](http://www.ca.flagaholic.com/account.html)  
[www.flagaholic.com/account.html](http://www.flagaholic.com/account.html)  
[www.banneraholic.co.nz/account.html](http://www.banneraholic.co.nz/account.html)  
[www.banneraholic.com.au/account.html](http://www.banneraholic.com.au/account.html)